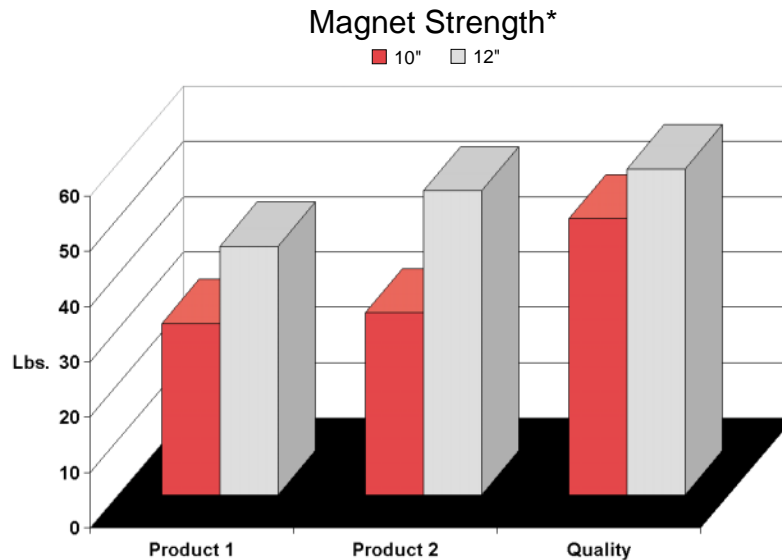


# Brake Assemblies



It is with great pleasure we introduce to you the **Quality Trailer Products High-Performance Electric Brake** assembly. With years of research and experience behind the development, we at Quality Trailer Products, feel we have produced a **superior** electric brake assembly. The key to the improved braking ability of the QTP electric brake lies in the design of the magnet. The QTP magnet generates substantially greater pulling power than others do at the same amperage. Additional features include shielding of the wires where they exit the magnet body and cross venting to dissipate heat and clean the armature surface. What does this mean for you, the customer? It equates into a stronger brake with less amperage! Industry proven reliability features have been addressed as well, from the double retractor springs at the top to the under-mount adjuster spring on the bottom, this brake was designed for miles of worry free service.

These are just a few reasons why, with a Quality Trailer Products **High-Performance** electric brake, you can **Stop With Confidence!**



\*Based on an independent lab study of comparable products in market place.

# Brake Assemblies

## Quality Quick Tips

### How to Select Brake Parts



Left Hand Electric Brake

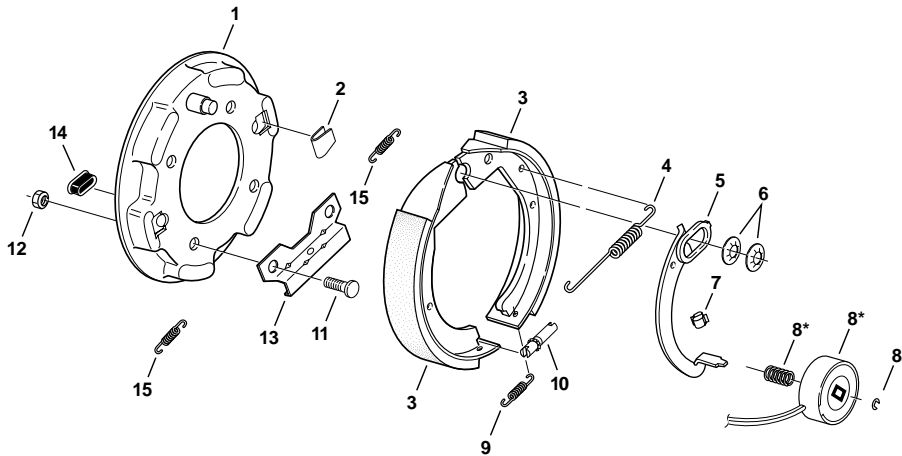
**STEP 1:** Determine your brake size by measuring the diameter of the brake shoe. It is also necessary to measure the width of the lining.

**STEP 2:** Determine the manufacturer of your brake. Some manufacturers put their name on the reverse side of the backing plate.

**STEP 3:** Compare the part you need with the exploded parts diagram until you find the part that matches yours.



Right Hand Electric Brake



### 7" X 1 1/4" ELECTRIC BRAKE - DEXTER - 2,200 LBS.

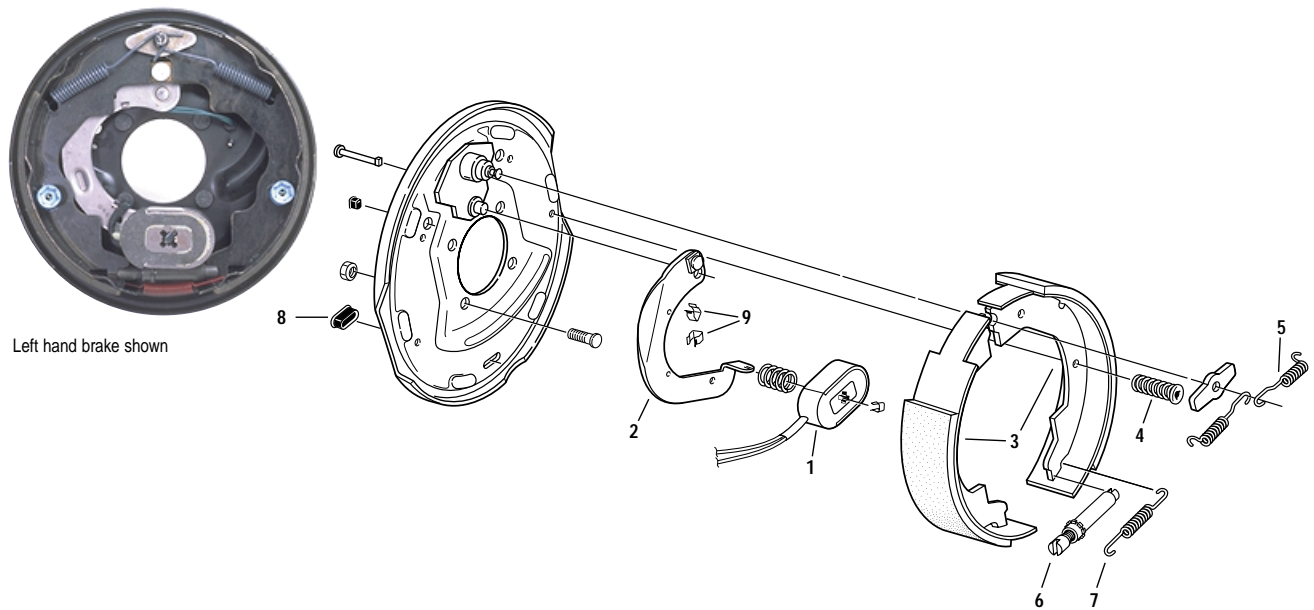
| Part # | Description               |
|--------|---------------------------|
| 23-47  | Left hand brake assembly  |
| 23-48  | Right hand brake assembly |

Note: 2,200 lb. capacity per pair.

### REPLACEMENT PARTS

| Part #                                       | Diagram # | Description  | Part #   | Diagram # | Description   |
|--|-----------|--|--|-----------|---|
| 36-36-4                                      | 1         | Backing plate assembly                                   | <i>For brakes manufactured after 4/1/90 (yellow wires)</i> |           |   |
| 46-23  | 2         | Shoe hold down spring                                    | K71-56   | 8         | Magnet kit: 1 Magnet, 1 Magnet clip.<br>1 Magnet spring |
| K71-45                                       | 3         | Shoe & lining kit: 1 Primary S & L,<br>1 Secondary S & L | 46-22  | 9         | Adjusting screw spring                                  |
| 46-24  | 4         | Retractor spring   | 43-21  | 10        | Adjusting screw   |
| 47-114-1                                     | 5         | Left hand actuating lever arm                            | 7-41   | 11        | Brake mounting bolt                                     |
| 47-115-1                                     |           | Right hand actuating lever arm                           | 6-17   | 12        | Brake mounting nut                                      |
| 46-3   | 6         | Anchor post clip   | 64-1   | 13        | Stabilizer bracket                                      |
| 27-5   | 7         | Wire clip  | 46-7   | 14        | Plug  |
| <i>For brakes manufactured before 4/1/90</i> |           |  | <i>For brakes manufactured after 8/1/90</i>                |           |   |
| K71-57                                       | 8         | Magnet kit: 1 Magnet, 1 Magnet clip,<br>1 Magnet spring  | 46-114   | 15        | Shoe centering spring                                   |

# Brake Assemblies



## 10" X 2 1/4" ELECTRIC BRAKE – QUALITY – 3,500 LBS.

| Part # | Description               |
|--------|---------------------------|
| 4701-L | Left hand brake assembly  |
| 4701-R | Right hand brake assembly |

Note: 3,500 lb. capacity per pair.

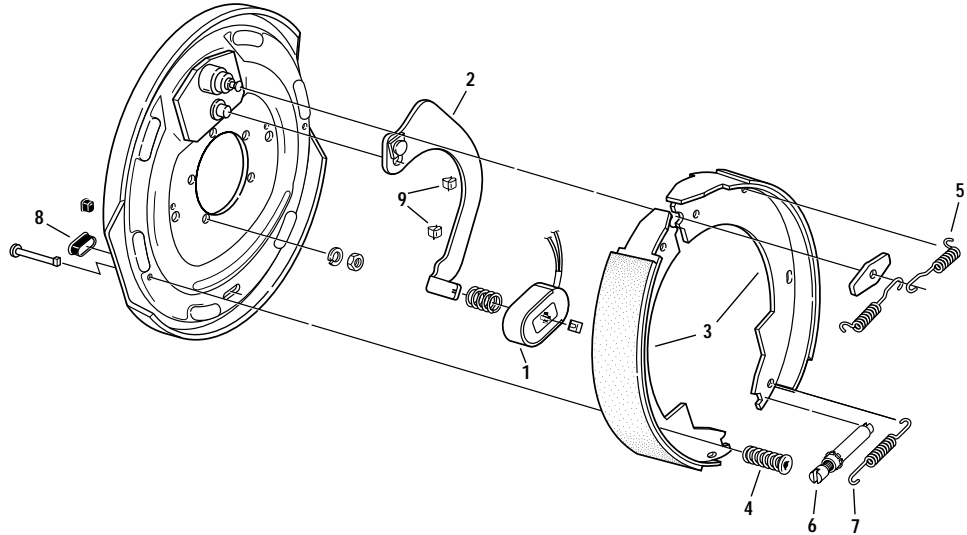
## REPLACEMENT PARTS

| Part #     | Diag. # | Description               | APPLICATIONS |        |       |       |
|------------|---------|---------------------------|--------------|--------|-------|-------|
|            |         |                           | Quality      | Dexter | Hayes | Al-Ko |
| BM10E      | 1       | Magnet kit, green wire    | •            | •      | •     | •     |
| BLL10E     |         | Left hand lever assembly  | •            |        | •     | •     |
| BLL10E-D   | 2       | Left hand lever assembly  |              | •      |       |       |
| BRL10E     |         | Right hand lever assembly | •            |        | •     | •     |
| BRL10E-D   |         | Right hand lever assembly |              | •      |       |       |
| BSL10E     | 3       | Shoe and lining           | •            | •      | •     | •     |
| BHD1012E   | 4       | Shoe hold down spring     | •            | •      | •     | •     |
| BRS10E     |         | Shoe retractor spring     |              |        | •     | •     |
| BRS1012E-D | 5       | Shoe retractor spring     | •            | •      |       |       |
| BA1012E    | 6       | Adjuster screw assembly   | •            | •      | •     | •     |
| BAS1012E   | 7       | Adjuster screw spring     | •            | •      | •     | •     |
| BDP1012EH  | 8       | Adjuster dust plug        | •            | •      | •     | •     |
| BMWC1012E  | 9       | Magnet wire clip, 2 each  | •            | •      | •     | •     |

# Brake Assemblies



Left hand brake shown



## 12" X 2" ELECTRIC BRAKE – QUALITY – 7,000 LBS.

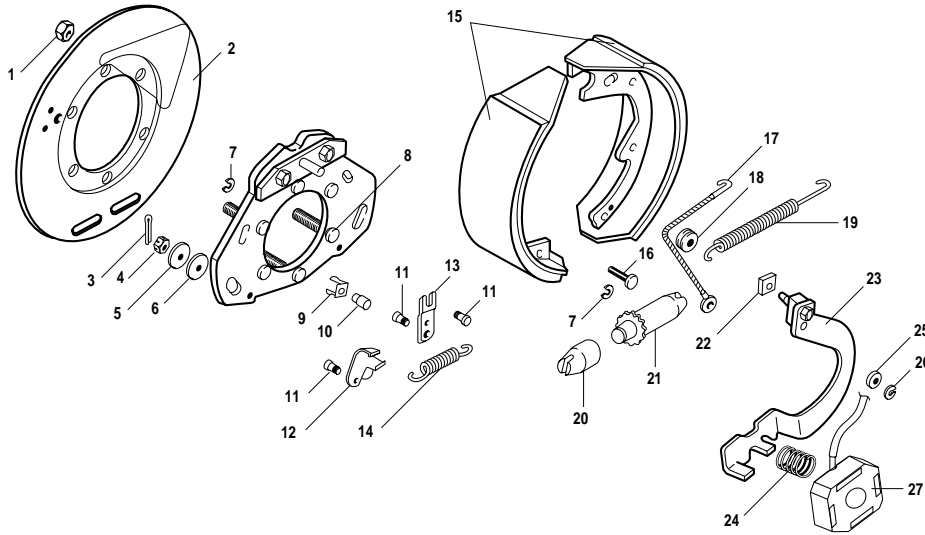
| Part # | Description               |
|--------|---------------------------|
| 4704-L | Left hand brake assembly  |
| 4704-R | Right hand brake assembly |

Note: 7,000 lb. capacity per pair.

## REPLACEMENT PARTS

| Part #     | Diag. # | Description               | APPLICATIONS |        |       |       |
|------------|---------|---------------------------|--------------|--------|-------|-------|
|            |         |                           | Quality      | Dexter | Hayes | AI-Ko |
| BM12E      | 1       | Magnet kit, white wire    | •            | •      | •     | •     |
| BLL12E     |         | Left hand lever assembly  | •            |        | •     | •     |
| BLL12E-D   |         | Left hand lever assembly  |              | •      |       |       |
| BRL12E     | 2       | Right hand lever assembly | •            |        | •     | •     |
| BRL12E-D   |         | Right hand lever assembly |              | •      |       |       |
| BSL12E     | 3       | Shoe and lining           | •            | •      | •     | •     |
| BHD1012E   | 4       | Shoe hold down spring     | •            | •      | •     | •     |
| BRS12E     |         | Shoe retractor spring     |              |        | •     | •     |
| BRS1012E-D | 5       | Shoe retractor spring     | •            | •      |       |       |
| BA1012E    | 6       | Adjuster screw assembly   | •            | •      | •     | •     |
| BAS1012E   | 7       | Adjuster screw spring     | •            | •      | •     | •     |
| BDP1012EH  | 8       | Adjuster dust plug        | •            | •      | •     | •     |
| BMWC1012E  | 9       | Magnet wire clip, 2each   | •            | •      | •     | •     |

# Brake Assemblies



## 12 1/4" X 3 3/4" ELECTRIC BRAKE – ALKO – 8,000 LBS.

| Part # | Description               |
|--------|---------------------------|
| 4718-L | Left hand brake assembly  |
| 4718-R | Right hand brake assembly |

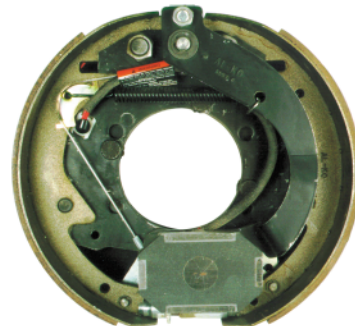
Note: 8,000 lb. capacity per pair.

### REPLACEMENT PARTS

| Part # | Diagram # | Description                   |
|--------|-----------|-------------------------------|
| 568235 | 1         | Brake attaching nut, 1/2"– 20 |
| 568289 | 2         | Dust cover assembly           |
| 568224 | 3         | Shoe hold down cotter pin     |
| 568233 | 4         | Shoe hold down nut            |
| 568225 | 5         | Shoe hold down spring         |
| 568232 | 6         | Shoe hold down washer         |
| 568249 | 7         | Pin retaining "E" clip        |
| 568250 | 8         | Brake mounting stud           |
| 568258 | 9         | Strain relief adapter         |
| 568243 | 10        | Strain relief                 |
| 568238 | 11        | Self adjuster pivot pin       |
| 568253 | 12        | Auto adjust lever, right hand |
| 568254 |           | Auto adjust lever, left hand  |
| 568241 | 13        | Self adjuster bias lever      |
| 568239 | 14        | Self adjuster spring          |
| 363924 | 15        | Shoe and lining               |
| 568227 | 16        | Shoe hold down bolt           |
| 568245 | 17        | Cable assembly                |
| 568246 | 18        | Cable guide                   |
| 568226 | 19        | Retract spring                |
| 568272 | 20        | Self adjuster socket          |

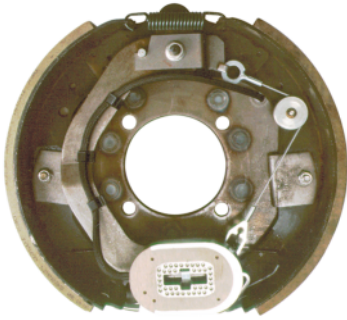
### REPLACEMENT PARTS

| Part # | Diagram # | Description                   |
|--------|-----------|-------------------------------|
| 568256 | 21        | Adjuster assembly, right hand |
| 568257 |           | Adjuster assembly, left hand  |
| 568242 | 22        | Slipper block                 |
| 568236 | 23        | Lever assembly, right hand    |
| 568237 |           | Lever assembly, left hand     |
| 568240 | 24        | Magnet spring                 |
| 568248 | 25        | Lever retaining washer        |
| 568247 | 26        | Lever retaining "E" clip      |
| 568252 | 27        | Magnet assembly               |

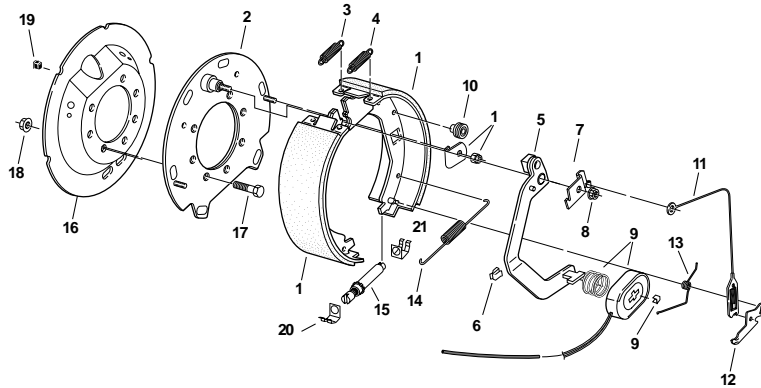


Right hand brake shown

# Brake Assemblies



Left hand brake shown



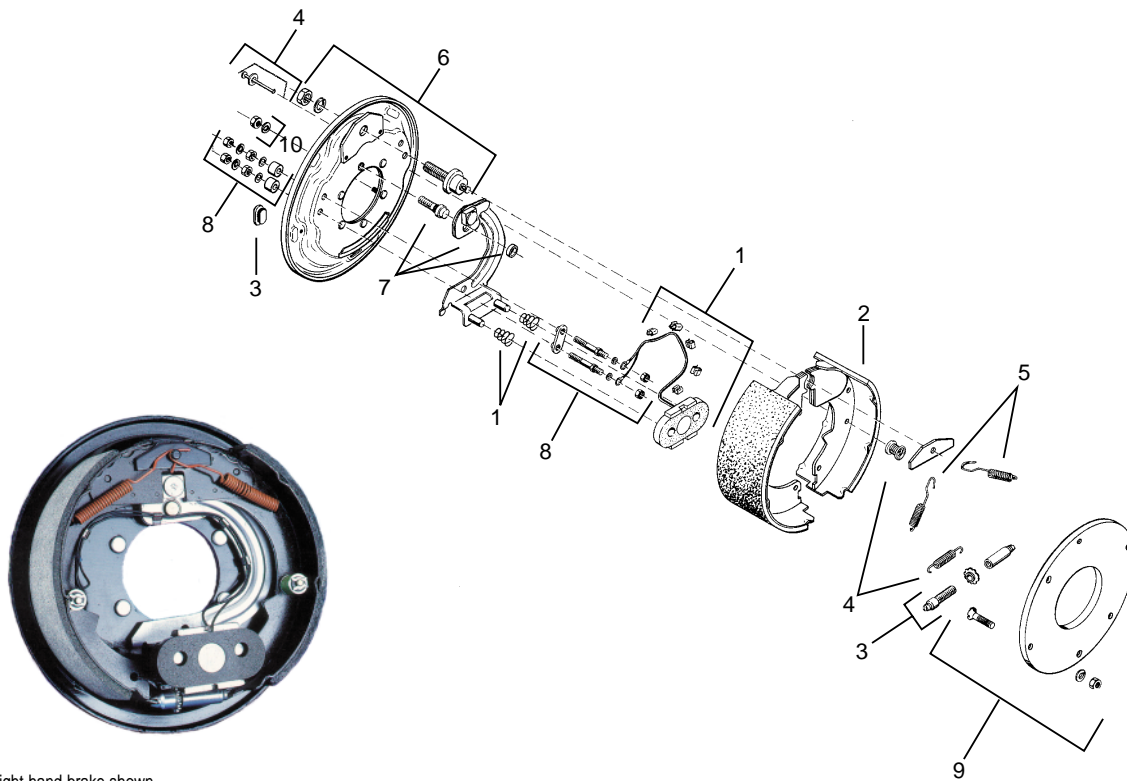
## 12¼" X 3⅜" ELECTRIC BRAKE – DEXTER – 8,000 - 10,000 LBS.

| Part # – Left Hand | Part # – Right Hand | Description   |
|--------------------|---------------------|---|
| 23-97              | 23-98               | Brake assembly 12¼" X 3⅜", 8,000 lb. capacity per pair  |
| 23-195             | 23-196              | Brake assembly 12¼" X 3⅜", 10,000 lb. capacity per pair |

## REPLACEMENT PARTS

| Part # – 8K | Part # – 9-10K | Diagram # | Description   |
|-------------|----------------|-----------|---|
| K71-049     | K71-049        | 1         | Shoe & lining kit, left hand, includes primary & secondary shoe & lining, shoe hold down washer, locknut  |
| K71-050     | K71-050        | 1         | Shoe & lining kit, right hand, includes primary & secondary shoe & lining, shoe hold down washer, locknut |
| 36-50-3     | 36-72-5        | 2         | Backing plate assembly  |
| 46-71       | 46-71          | 3         | Shoe return spring, rear (black)  |
| 46-83       | 46-83          | 4         | Shoe return spring, front (green)   |
| 47-123-38   | 47-123-38      | 5         | Actuating arm assembly, left hand   |
| 47-123-37   | 47-123-37      |           | Actuating arm assembly, right hand  |
| 27-39       | 27-39          | 6         | Wire clamps   |
| 71-455-1    | 71-455-1       | 7         | Arm/shoe retainer, left hand  |
| 71-455-2    | 71-455-2       |           | Arm/shoe retainer, right hand   |
| 6-62        | 6-62           | 8         | Flange nut  |
| K71-375     | K71-376        | 9         | Magnet kit, includes magnet, magnet retainer clip, magnet spring  |
| 71-20       | 71-20          | 11        | Adjuster cable  |
| 71-19-1     | 71-19-1        | 12        | Adjuster lever, left hand   |
| 71-19-2     | 71-19-2        |           | Adjuster lever, right hand  |
| 46-73       | 46-73          | 13        | Adjuster lever spring, left hand (blue)   |
| 46-74       | 46-74          |           | Adjuster lever spring, right hand (white)   |
| 46-72       | 46-72          | 14        | Adjuster spring   |
| 48-9        | 48-9           | 15        | Adjuster assembly, left hand  |
| 48-10       | 48-10          |           | Adjuster assembly, right hand   |
| 7-97        | 7-116          | 17        | Brake mounting bolt   |
| 6-46        | 6-92           | 18        | Brake mounting nut  |
| 46-16       | 46-16          | 19        | Wire grommet  |
| 36-53-3     | n/a            | 16        | Dust cover for drop axle (one piece)  |
| n/a         | 40-132         | 20        | Adjuster clip (thread end)  |
| n/a         | 40-133         | 21        | Adjuster clip (barrel end)  |

# Brake Assemblies



Right hand brake shown

## 12 1/4" X 3 1/2" ELECTRIC BRAKE – WARNER – 10,000 LBS.

| Part #  | Description               |
|---------|---------------------------|
| 1301-13 | Left hand brake assembly  |
| 1301-12 | Right hand brake assembly |

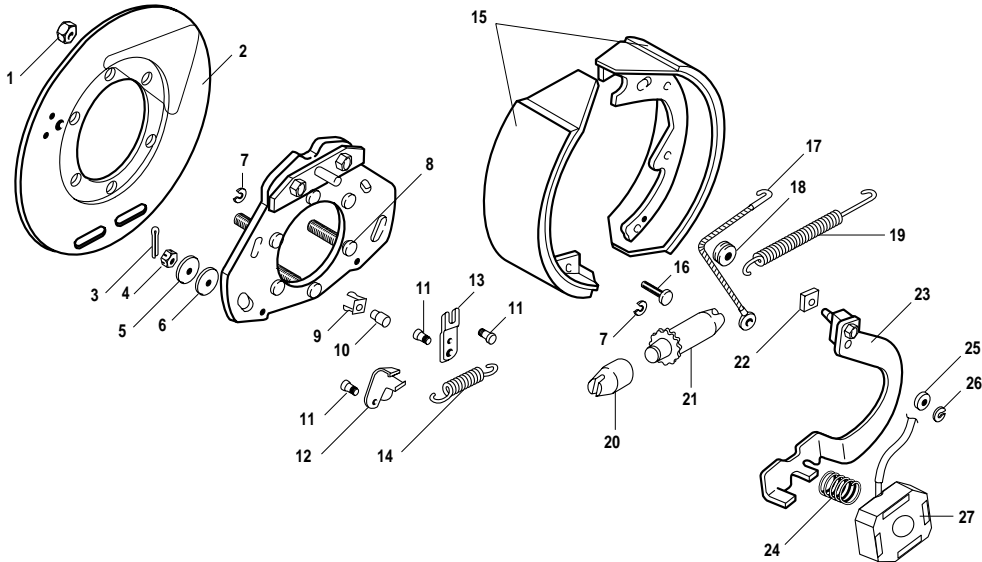
Note: 10,000 lb. capacity per pair.

## REPLACEMENT PARTS

| Part #       | Diagram # | Description  |
|--------------|-----------|--|
| 1301-100-014 | 1         | Magnet kit (1 magnet, 5 wire retaining clips, 2 springs)   |
| 1301-100-005 | 2         | Shoe & lining/Shoe hold down spring kit (2 shoe assemblies, 2 hold down springs, 2 hold down pins, 4 hold down spring cups, 2 spherical washers, 2 "X" washer retainers)   |
| 1301-100-006 | 3         | Adjuster/Adjuster spring kit (1 adjuster assembly, 1 adjuster plug, 1 adjuster spring)   |
| 1301-100-007 | 4         | Hold down kit ( 2 hold down springs, 2 hold down pins, 2 rubber washers)   |
| 1301-100-008 | 5         | Shoe return spring kit (2 shoe return springs, 1 anchor pin plate)   |
| 1301-156-004 | 6         | Backing plate kit (1 backing plate, 1 anchor pin, 1 nut, 1 washer)   |
| 1301-100-016 | 7         | Right lever arm kit (1 lever arm, 1 pivot screw, 1 pivot bearing)  |
| 1301-100-015 | 7         | Left lever arm kit (1 lever arm, 1 pivot screw, 1 pivot bearing)   |
| 1301-100-011 | 8         | Terminal assembly kit (2 internal nuts, 2 internal washers, 2 terminal posts, 1 terminal, 2 insulators, 4 external washers, 4 external nuts, 2 flat washers, 2 hole plugs) |
| 1301-100-013 | 9         | Armature kit ( 2 armature plates, 12 screws, 12 lock washers, 24 nuts)   |
| 1301-100-003 | 10        | Mounting accessory kit (12 nuts, 12 washers)   |



# Brake Assemblies



## 12 1/4" X 3 1/2" ELECTRIC BRAKE – ALKO – 9,000, 10,000 AND 12,000 LB.

| Part #   | Description               |
|----------|---------------------------|
| 568255.2 | Left hand brake assembly  |
| 568255.1 | Right hand brake assembly |

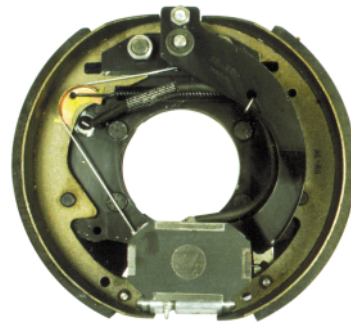
Note: 12,000 lb. capacity per pair.

### REPLACEMENT PARTS

| Part #   | Diagram # | Description                     |
|----------|-----------|---------------------------------|
| 568235   | 1         | Brake attaching nut, 1/2"– 20   |
| 568229.1 | 2         | Dust cover assembly, left hand  |
| 568229.2 | 2         | Dust cover assembly, right hand |
| 568224   | 3         | Shoe hold down cotter pin       |
| 568233   | 4         | Shoe hold down nut              |
| 568225   | 5         | Shoe hold down spring           |
| 568232   | 6         | Shoe hold down washer           |
| 568249   | 7         | Pin retaining "E" clip          |
| 568250   | 8         | Brake mounting stud             |
| 568258   | 9         | Strain relief adapter           |
| 568243   | 10        | Strain relief                   |
| 568238   | 11        | Self adjuster pivot pin         |
| 568253   | 12        | Auto adjust lever, right hand   |
| 568254   |           | Auto adjust lever, left hand    |
| 568241   | 13        | Self adjuster bias lever        |
| 568239   | 14        | Self adjuster spring            |
| 568251   | 15        | Shoe and lining                 |
| 568227   | 16        | Shoe hold down bolt             |
| 568245   | 17        | Cable assembly                  |
| 568246   | 18        | Cable guide                     |
| 568226   | 19        | Retract spring                  |

### REPLACEMENT PARTS

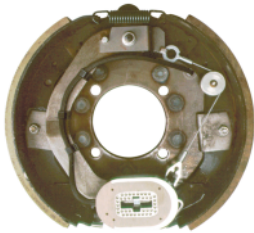
| Part # | Diagram # | Description                   |
|--------|-----------|-------------------------------|
| 568272 | 20        | Self adjuster socket          |
| 568256 | 21        | Adjuster assembly, right hand |
| 568257 |           | Adjuster assembly, left hand  |
| 568242 | 22        | Slipper block                 |
| 568236 | 23        | Lever assembly, right hand    |
| 568237 |           | Lever assembly, left hand     |
| 568240 | 24        | Magnet spring                 |
| 568248 | 25        | Lever retaining washer        |
| 568247 | 26        | Lever retaining "E" clip      |
| 568252 | 27        | Magnet assembly               |



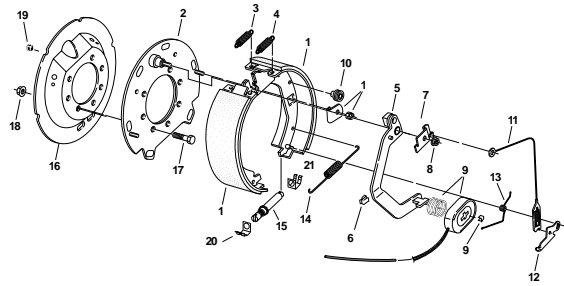
Right hand brake shown



# Brake Assemblies



Left hand brake shown



## 12¼" X 4"; 12¼" X 5" HEAVY DUTY ELECTRIC BRAKE – DEXTER – 10,000 - 12,000 - 15,000 LBS.

| Part # – Left Hand | Part # – Right Hand | Description   |
|--------------------|---------------------|---|
| 23-198             | 23-199              | Brake assembly 12¼ X 4", 10,000 lb. capacity per pair |
| 23-201             | 23-202              | Brake assembly 12¼ X 5", 12,000 lb. capacity per pair |
| 23-204             | 23-205              | Brake assembly 12¼ X 5", 15,000 lb. capacity per pair |

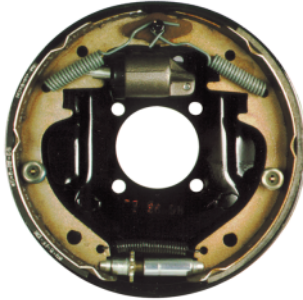
## REPLACEMENT PARTS

| Part # – 10K<br>12¼ X 4 | Part # – 12K<br>12¼ X 5 | Part # – 15K<br>12¼ X 5 | Diagram # | Description   |
|-------------------------|-------------------------|-------------------------|-----------|---|
| K71-51                  | K71-53                  | K71-53                  | 1         | Left hand Shoe & Lining Kit (1 left hand primary, 1 left hand secondary, 2 shoe hold down washers, 2 lock nuts)                 |
| K71-52                  | K71-54                  | K71-54                  | 1         | Right hand Shoe & Lining Kit (1 right hand primary, 1 right hand secondary, 2 shoe hold down washers, 1 pivot pin, 2 lock nuts) |
| 36-72-5                 | 36-72-6                 | 36-72-6                 | 2         | Backing plate assembly  |
| 46-71                   | 46-71                   | 46-71                   | 3         | Shoe return spring; rear; black   |
| 46-83                   | 46-83                   | 46-83                   | 4         | Shoe return spring; front; green  |
| 47-123-6                | 47-123-4                | 47-123-4                | 5         | Left hand actuator arm assembly   |
| 47-123-5                | 47-123-3                | 47-123-3                | 5         | Right hand actuator arm assembly  |
| 27-39                   | 27-39                   | 27-39                   | 6         | Wire clip   |
| 71-16                   | 71-16                   | 71-16                   | 7         | Left hand arm/shoe retainer   |
| 71-16-1                 | 71-16-1                 | 71-16-1                 | 7         | Right hand arm/shoe retainer  |
| 6-62                    | 6-62                    | 6-62                    | 8         | Flange nut  |
| K71-376                 | K71-377                 | K71-378                 | 9         | Magnet Kit (1 magnet retainer clip, 1 magnet assembly, 1 magnet mtg. spring)  |
| 71-18                   | 71-18                   | 71-18                   | 10        | Cable guide   |
| 71-20                   | 71-20                   | 71-20                   | 11        | Adjuster cable  |
| 71-19-1                 | 71-19-1                 | 71-19-1                 | 12        | Left hand adjuster lever  |
| 71-19-2                 | 71-19-2                 | 71-19-2                 | 12        | Right hand adjuster lever   |
| 46-73                   | 46-73                   | 46-73                   | 13        | Left hand adjuster lever spring   |
| 46-74                   | 46-74                   | 46-74                   | 13        | Right hand adjuster lever spring  |
| 46-72                   | 46-72                   | 46-72                   | 14        | Adjuster spring   |
| 48-9                    | 48-9                    | 48-9                    | 15        | Left hand adjuster assembly   |
| 48-10                   | 48-10                   | 48-10                   | 15        | Right hand adjuster assembly  |
| 36-115-22               | 36-115-22               | 36-115-22               | 16        | Dust shield kit   |
| 7-116                   | 7-116                   | 7-116                   | 17        | Brake mounting screw  |
| 6-92                    | 6-92                    | 6-92                    | 18        | Brake mounting nut  |
| 27-14                   | 27-14                   | 27-14                   | 19        | Sleeve  |
| 46-132                  | 46-132                  | 46-132                  | 20        | Adjuster clip (thread end)  |
| 46-133                  | 46-133                  | 46-133                  | 21        | Adjuster clip (barrel end)  |
| 46-16                   | 46-16                   | 46-16                   | ns        | Wire grommet  |

# Brake Assemblies

## Quality Quick Tips

### How to Select Brake Parts

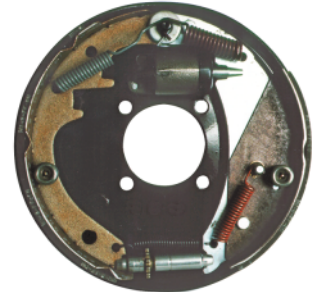


Uniservo lefthand brake shown

**STEP 1:** Determine your brake size by measuring the diameter of the brake shoe. It is also necessary to measure the width of the lining.

**STEP 2:** Determine the manufacturer of your brake. Some manufacturers put their name on the reverse side of the backing plate.

**STEP 3:** Compare the part you need with the exploded parts diagram until you find the part that matches yours.



Free backing right hand brake shown

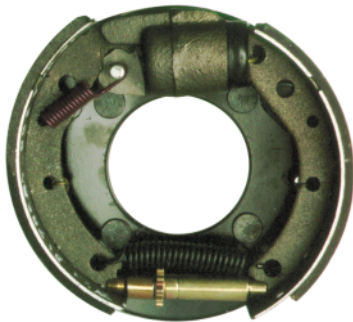
### 7" X 1 3/4" HYDRAULIC BRAKE – ATWOOD – 2,500 LBS.

| Part # | Description                         |
|--------|-------------------------------------|
| 4712-L | Left hand brake assembly, Uniservo  |
| 4712-R | Right hand brake assembly, Uniservo |

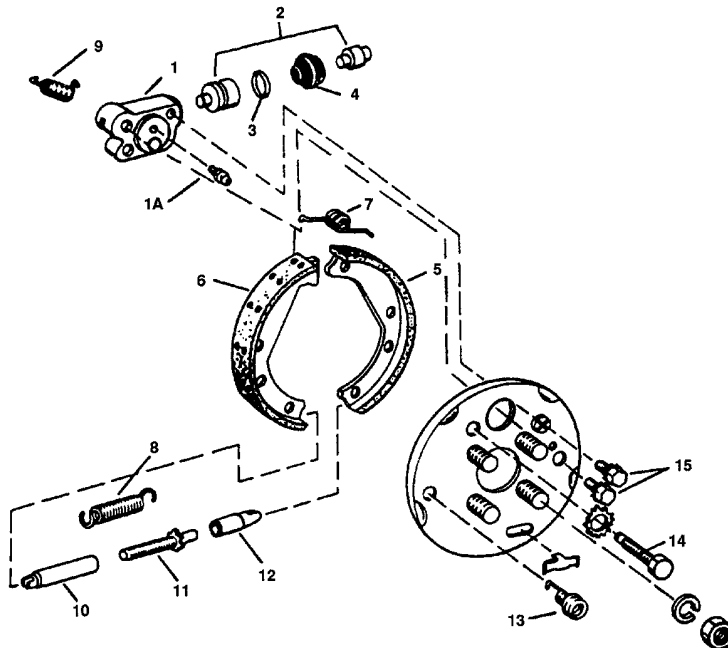
Note: 2,500 lb. capacity per pair.

### REPLACEMENT PARTS

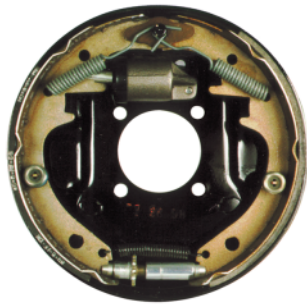
| Part # | Diagram #     | Description  |
|--------|---------------|--|
| 84210  | 1, 1A, 14, 15 | Wheel Cylinder Kit - for one axle (1 wheel cylinder - right hand, 1 wheel cylinder - left hand, 2 bleeder nuts, 4 5/16" - 18 X 3/4" cap screw, 2 5/16" - 18 flat head screw) |
| 19861  | 5, 6          | Shoe and Lining Kit - for one axle (2 primary shoes with lining, 2 secondary shoes with lining)  |
| 23400  | 7, 8, 9, 13   | Spring Kit - for one axle (2 adjusting screw springs, 2 secondary retractor springs, 1 torsion spring - right hand, 1 torsion spring - left hand, 4 shoe hold down springs)  |
| 18191  |               | Dust clip  |
| 23401  | 10, 11, 12    | Adjusting screw, pivot socket and nut assembly (1 nut and socket, 1 pivot socket)  |



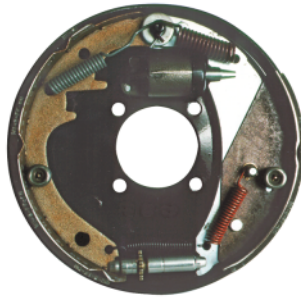
Right hand brake shown



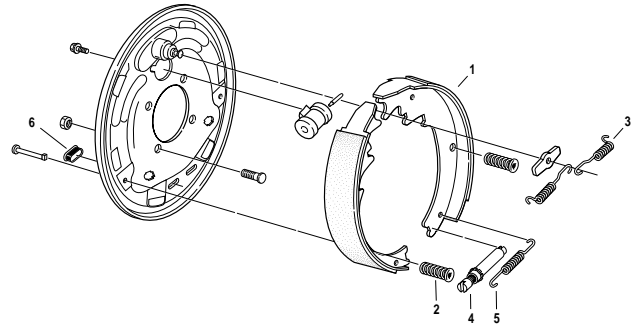
# Brake Assemblies



Uniservo lefthand brake shown



Free backing right hand brake shown



## 10" X 2¼" HYDRAULIC BRAKE – DICO – 3,500 LBS.

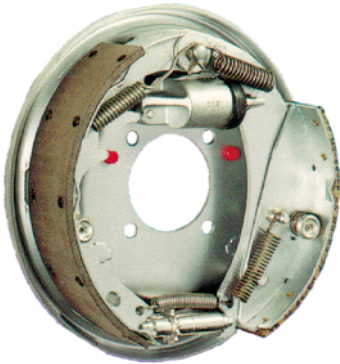
| Part # | Description             | Part # | Description                     |
|--------|-------------------------|--------|---------------------------------|
| 4710-L | Left hand, uniservo     | 44454  | Left hand, uniservo premier     |
| 4710-R | Right hand, uniservo    | 44453  | Right hand, uniservo premier    |
| 40716  | Left hand, freebacking  | 44235  | Left hand, freebacking premier  |
| 40715  | Right hand, freebacking | 44234  | Right hand, freebacking premier |

Note: 3,500 lb. capacity per pair.

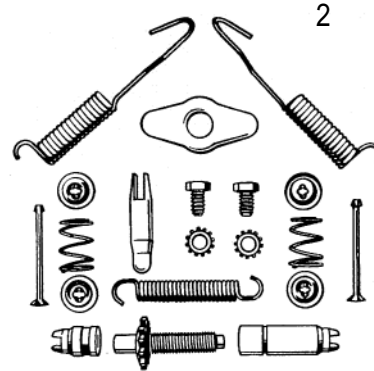
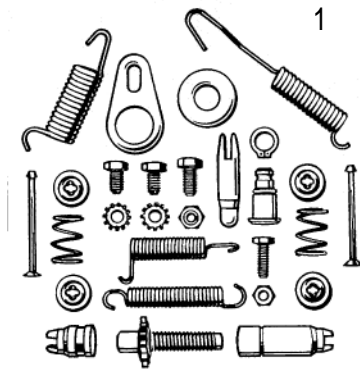
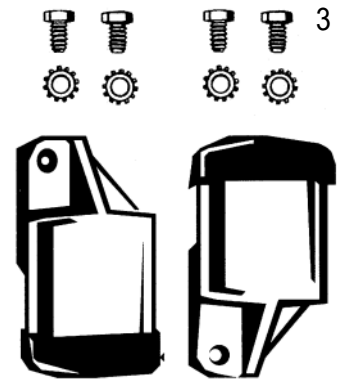
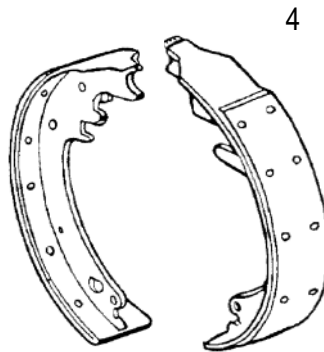
## REPLACEMENT PARTS

| Part #       | Diag. # | Description                | Brake Assembly Applications |           |             |              |
|--------------|---------|----------------------------|-----------------------------|-----------|-------------|--------------|
|              |         |                            | 10"                         | 10" Free. | 10" Premier | 10" Free/Pre |
| BSL10H       | 1       | Shoe and lining            | •                           |           |             |              |
| BSL10H-F     |         | Shoe and lining            |                             | •         |             |              |
| BSL10H-P     |         | Shoe and lining            |                             |           | •           |              |
| BSL10H-FP    |         | Shoe and lining            |                             |           |             | •            |
| BHD10H       | 2       | Shoe hold down spring      | •                           |           |             |              |
| BHD10H-F     |         | Shoe hold down spring      |                             | •         |             |              |
| BHD10H-P     |         | Shoe hold down spring      |                             |           | •           |              |
| BHD10H-FP    |         | Shoe hold down spring      |                             |           |             | •            |
| BRS10H       | 3       | Shoe return spring         | •                           |           |             |              |
| BRS10H-F     |         | Shoe return spring         |                             | •         |             |              |
| BRS10H-P     |         | Shoe return spring         |                             |           | •           |              |
| BRS10H-FP    |         | Shoe return spring         |                             |           |             | •            |
| BAS10H       | 4       | Adjuster screw assembly    | •                           | •         |             |              |
| BAS10H-FP    |         | Adjuster screw assembly    |                             |           | •           | •            |
| BA10H        | 5       | Adjuster screw spring      | •                           | •         |             |              |
| BA10H-FP     |         | Adjuster screw spring      |                             |           | •           | •            |
| BDP1012EH    | 6       | Adjuster dust plug         | •                           | •         | •           | •            |
| BWCB1012H    |         | Wheel cylinder rebuild kit | •                           | •         | •           | •            |
| BWC1012H-R   |         | Wheel cylinder, right hand | •                           | •         |             |              |
| BWC1012H-RFP |         | Wheel cylinder, right hand |                             |           | •           | •            |
| BWC1012H-L   |         | Wheel cylinder, left hand  | •                           | •         |             |              |
| BWC1012H-LFP |         | Wheel cylinder, right hand |                             |           | •           | •            |

# Brake Assemblies



Right hand freebacking galvanized brake shown



## 10" X 2 1/4" HYDRAULIC BRAKE – AMRAD – 3,500 LBS.

| Part # | Description                      | Part # | Description                         |
|--------|----------------------------------|--------|-------------------------------------|
| 510PL  | Left hand, uniservo, painted     | 510GL  | Left hand, uniservo, galvanized     |
| 510PR  | Right hand, uniservo, painted    | 510GR  | Right hand, uniservo, galvanized    |
| 500PL  | Left hand, freebacking, painted  | 500GL  | Left hand, freebacking, galvanized  |
| 500PR  | Right hand, freebacking, painted | 500GR  | Right hand, freebacking, galvanized |

Note: 3,500 lb. capacity per pair.

## REPLACEMENT PARTS

| Part # | Diagram # | Description  |
|--------|-----------|--|
| 900    | 1         | Replacement Parts Kit, 10" Freebacking   |
| 800    | 2         | Replacement Parts Kit, 10" Uniservo  |
| 700    | 3         | Replacement Wheel Cylinder Kit, standard   |
| 701    |           | Replacement Wheel Cylinder Kit, galvanized, (1 left hand and 1 right hand cylinder with mounting bolts)                    |
| 400    | 4         | Brake Shoe & Lining Kit, Galvanized, 10" X 2 1/4" freebacking (2 primary shoes with lining, 2 secondary shoes with lining) |
| 401    |           | Brake Shoe & Lining Kit, Painted, 10" X 2 1/4" freebacking (2 primary shoes with lining, 2 secondary shoes with lining)    |
| 403    |           | Brake Shoe & Lining Kit, Galvanized, 10" X 2 1/4" uniservo (2 primary shoes with lining, 2 secondary shoes with lining)    |
| 404    |           | Brake Shoe & Lining Kit, Painted, 10" X 2 1/4" uniservo (2 primary shoes with lining, 2 secondary shoes with lining)       |

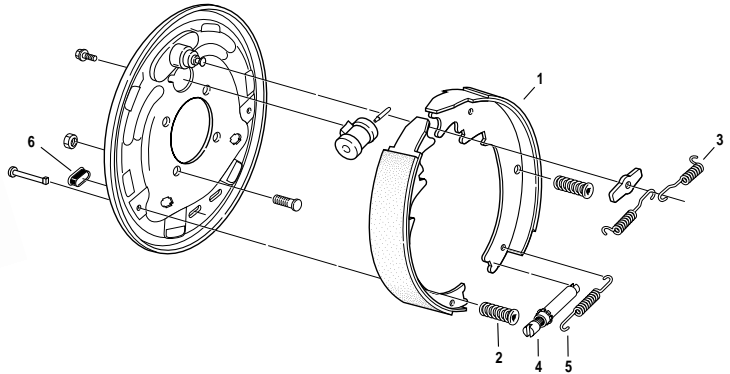
# Brake Assemblies



Uniservo right hand brake shown



Freebacking right hand brake shown



## 12" X 2" HYDRAULIC BRAKE – DICO – 6,000 LBS.

| Part # | Description             | Part # | Description                     |
|--------|-------------------------|--------|---------------------------------|
| 4711-L | Left hand, uniservo     | 44984  | Left hand, uniservo premier     |
| 4711-R | Right hand, uniservo    | 44983  | Right hand, uniservo premier    |
| 42029  | Left hand, freebacking  | 44896  | Left hand, freebacking premier  |
| 42028  | Right hand, freebacking | 44895  | Right hand, freebacking premier |

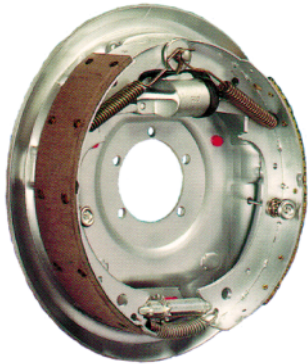
Note: 6,000 lb. capacity per pair.

## REPLACEMENT PARTS

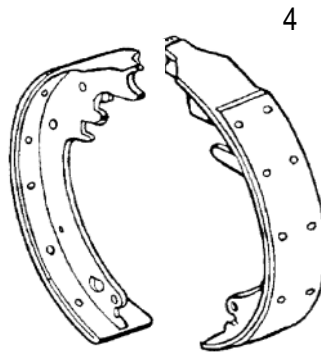
| Part #       | Diag. # | Description                | Brake Assembly Applications |           |             |              |
|--------------|---------|----------------------------|-----------------------------|-----------|-------------|--------------|
|              |         |                            | 12"                         | 12" Free. | 12" Premier | 12" Free/Pre |
| BSL12H       | 1       | Shoe and lining            | •                           |           |             |              |
| BSL12H-F     |         | Shoe and lining            |                             | •         |             |              |
| BSL12H-P     |         | Shoe and lining            |                             |           | •           |              |
| BSL12H-FP    |         | Shoe and lining            |                             |           |             | •            |
| BHD12H       | 2       | Shoe hold down spring      | •                           |           |             |              |
| BHD12H-F     |         | Shoe hold down spring      |                             | •         |             |              |
| BHD12H-P     |         | Shoe hold down spring      |                             |           | •           |              |
| BHD12H-FP    |         | Shoe hold down spring      |                             |           |             | •            |
| BRS12H       | 3       | Shoe return spring         | •                           |           |             |              |
| BRS12H-F     |         | Shoe return spring         |                             | •         |             |              |
| BRS12H-P     |         | Shoe return spring         |                             |           | •           |              |
| BRS12H-FP    |         | Shoe return spring         |                             |           |             | •            |
| BA12H        | 4       | Adjuster screw assembly    | •                           | •         |             |              |
| BA12H-FP     |         | Adjuster screw assembly    |                             |           | •           | •            |
| BAS12H-F     | 5       | Adjuster screw spring      | •                           | •         |             |              |
| BAS12H-FP    |         | Adjuster screw spring      |                             |           | •           | •            |
| BDP1012EH    | 6       | Adjuster dust plug         | •                           | •         | •           | •            |
| BWCB1012H    |         | Wheel cylinder rebuild kit | •                           | •         | •           | •            |
| BWC1012H-R   |         | Wheel cylinder, right hand | •                           | •         |             |              |
| BWC1012H-RFP |         | Wheel cylinder, right hand |                             |           | •           | •            |
| BWC1012H-L   |         | Wheel cylinder, left hand  | •                           | •         |             |              |
| BWC1012H-LFP |         | Wheel cylinder, left hand  |                             |           | •           | •            |



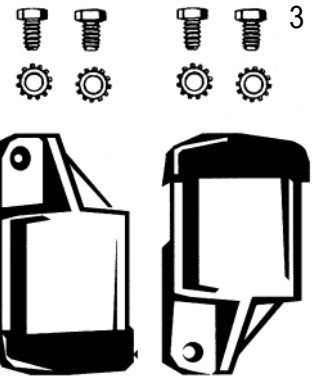
# Brake Assemblies



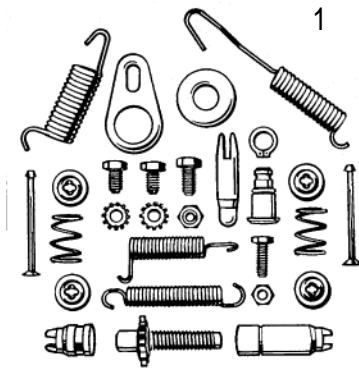
Right hand uniservo galvanized brake shown



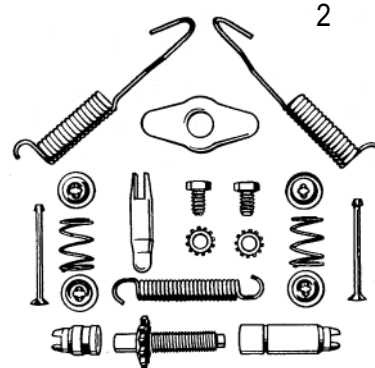
4



3



1



2

## 12" X 2" HYDRAULIC BRAKE – AMRAD – 5,200 LBS.

| Part # | Description                      | Part # | Description                         |
|--------|----------------------------------|--------|-------------------------------------|
| 512PL  | Left hand, uniservo, painted     | 512GL  | Left hand, uniservo, galvanized     |
| 512PR  | Right hand, uniservo, painted    | 512GR  | Right hand, uniservo, galvanized    |
| 502PL  | Left hand, freebacking, painted  | 502GL  | Left hand, freebacking, galvanized  |
| 502PR  | Right hand, freebacking, painted | 502GR  | Right hand, freebacking, galvanized |

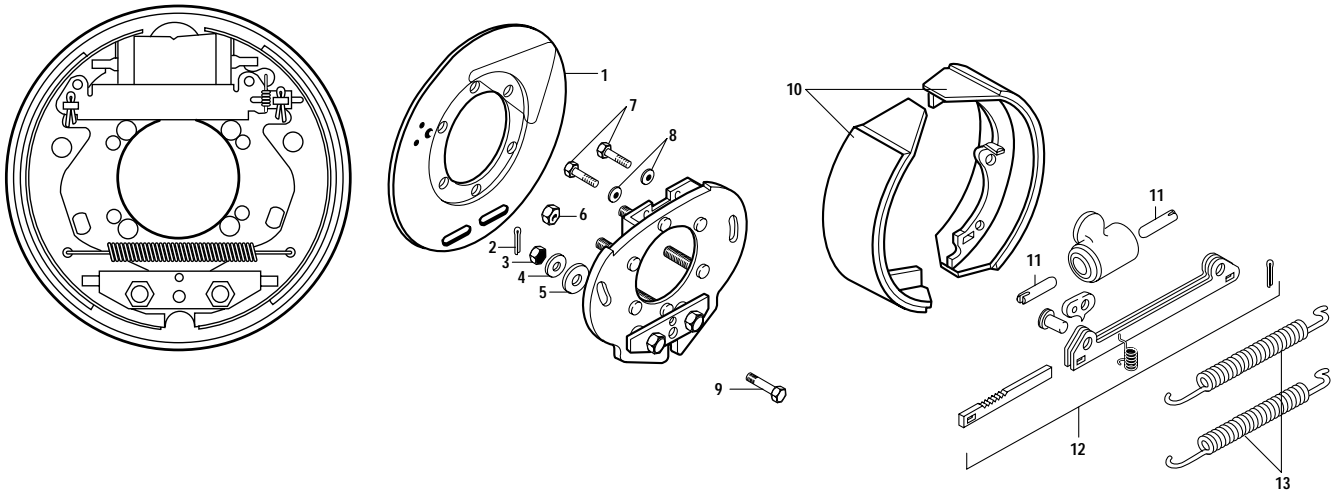
Note: 5,200 lb. capacity per pair.

## REPLACEMENT PARTS

| Part # | Diagram # | Description  |
|--------|-----------|--|
| 912    | 1         | Replacement Parts Kit, 12" Freebacking   |
| 812    | 2         | Replacement Parts Kit, 12" Uniservo  |
| 700    | 3         | Replacement Wheel Cylinder Kit, standard (1 left hand and 1 right hand cylinder with mounting bolts)                   |
| 701    |           | Replacement Wheel Cylinder Kit, galvanized (1 left hand and 1 right hand cylinder with mounting bolts)                 |
| 420    | 4         | Brake Shoe & Lining Kit, Galvanized, 12" X 2" freebacking (2 primary shoes with lining, 2 secondary shoes with lining) |
| 421    |           | Brake Shoe & Lining Kit, Painted, 12" X 2" freebacking (2 primary shoes with lining, 2 secondary shoes with lining)    |
| 423    |           | Brake Shoe & Lining Kit, Galvanized, 12" X 2" uniservo (2 primary shoes with lining, 2 secondary shoes with lining)    |
| 424    |           | Brake Shoe & Lining Kit, Painted, 12" X 2" uniservo (2 primary shoes with lining, 2 secondary shoes with lining)       |



# Brake Assemblies



## 12¼" X 3¾" HYDRAULIC BRAKE – ALKO – 8,000 LBS.

| Part # | Description                                  |
|--------|--|
| 568277 | Left and right hand brake assembly, Duoservo |

Note: 8,000 lb. capacity per pair.

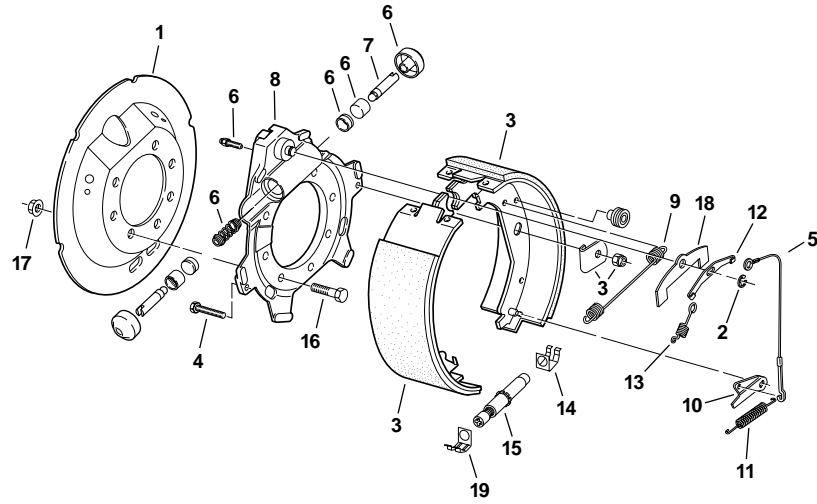
## REPLACEMENT PARTS

| Part # | Diagram # | Description                   |
|--------|-----------|-------------------------------|
| 568004 | 1         | Dust cover assembly           |
| 568224 | 2         | Shoe hold down cotter pin     |
| 568233 | 3         | Shoe hold down nut            |
| 568225 | 4         | Shoe hold down spring         |
| 568232 | 5         | Shoe hold down washer         |
| 568235 | 6         | Nut, ½" – 20 UNF hex standard |
| 568231 | 7         | Bolt, ¾" – 16 x ¾"            |
| 363334 | 8         | Lock washer, ¾"               |
| 568227 | 9         | Shoe hold down bolt           |
| 363925 | 10        | Shoe & lining                 |
| 568228 | 11        | Push rod                      |
| 568259 | 12        | Self-adjuster assembly        |
| 568226 | 13        | Retract spring                |
| 568230 |           | Connector-brake line          |

# Brake Assemblies



Right hand brake shown



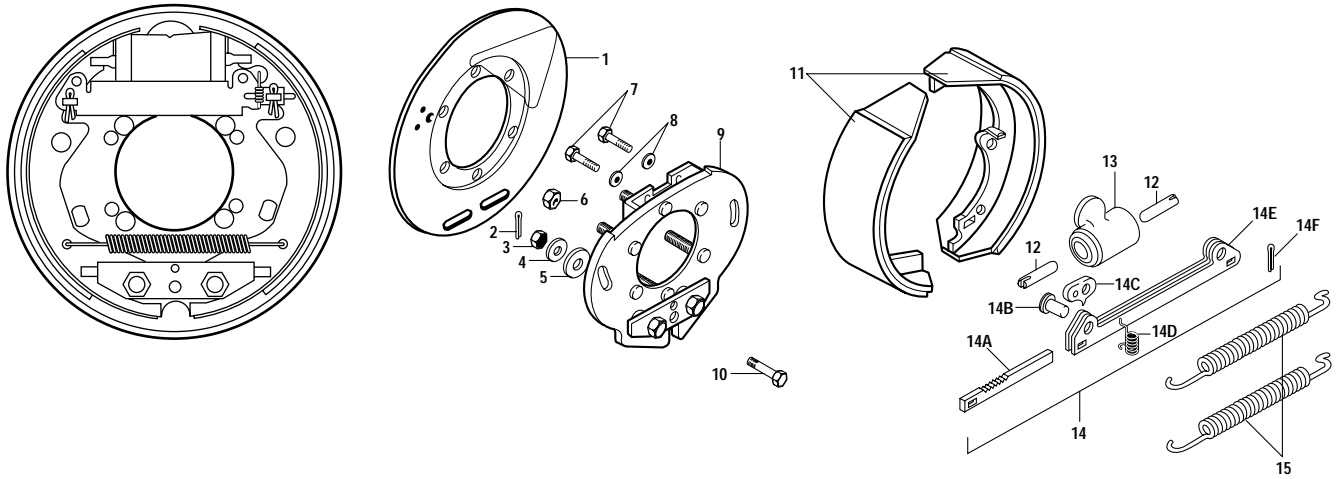
## 12¼" X 3¾" HYDRAULIC BRAKE – DEXTER – 8,000 - 10,000 LBS.

| Part # – Left Hand | Part # – Right Hand | Description   |
|--------------------|---------------------|---|
| 23-138             | 23-139              | Brake assembly, 12¼ X 3¾, Duoservo 8,000 lb., capacity per pair |
| 23-410             | 23-411              | Brake assembly, 12¼ X 3¾, Duoservo 10,000 lb. capacity per pair |

## REPLACEMENT PARTS

| Part # – 8K | Part # – 9 - 10K | Diagram # | Description  |
|-------------|------------------|-----------|--|
| 69-53       | 69-53            | 2         | Retainer   |
| K71-165     | K71-165          | 3         | Shoe & lining kit, left hand, includes primary & secondary shoe & lining, shoe hold down washer, locknut, piston stop  |
| K71-166     | K71-166          |           | Shoe & lining kit, right hand, includes primary & secondary shoe & lining, shoe hold down washer, locknut, piston stop |
| 7-113       | 7-113            | 4         | Shoe hold down screw   |
| K71-080     | K71-081          | 6         | Wheel cylinder kit (1.00" bore), includes spring, boot, piston, cup, expander, bleeder screw                           |
| 54-33       | 54-33            | 7         | Cylinder push rod  |
| 36-64-3     | 36-63-6          | 8         | Spider assembly  |
| 46-87       | 46-87            | 9         | Retractor spring   |
| 71-164      | 71-462           | 5         | Adjuster cable   |
| 71-19-1     | 71-464           | 10        | Adjuster lever, left hand  |
| 71-19-2     | 71-463           |           | Adjuster lever, right hand   |
| 46-73       | 46-135           | 11        | Adjuster lever spring, left hand   |
| 46-74       | 46-134           |           | Adjuster lever spring, right hand  |
| 46-72       | n/a              |           | Adjuster spring  |
| 48-9        | 48-19            | 15        | Adjuster assembly, left hand   |
| 48-10       | 48-20            |           | Adjuster assembly, right hand  |
| 7-97        | 7-116            | 16        | Brake mounting bolt  |
| 6-46        | 6-92             | 17        | Brake mounting nut   |
| 34-62       | 34-62            | 18        | Piston stop  |
| n/a         | 71-456           | 12        | Cable attachment bracket   |
| n/a         | 46-131-1         | 13        | Extension spring   |
| n/a         | 46-133           | 14        | Adjuster clip (barrel end)   |
| n/a         | 45-132           | 19        | Adjuster clip (thread end)   |

# Brake Assemblies



## 12¼" X 3½" HYDRAULIC BRAKE – ALKO – 12,000 LBS.

| Part # | Description                                 |
|--------|---|
| 568213 | Left or right hand brake assembly, Duoservo |

Note: 12,000 lb. capacity per pair.

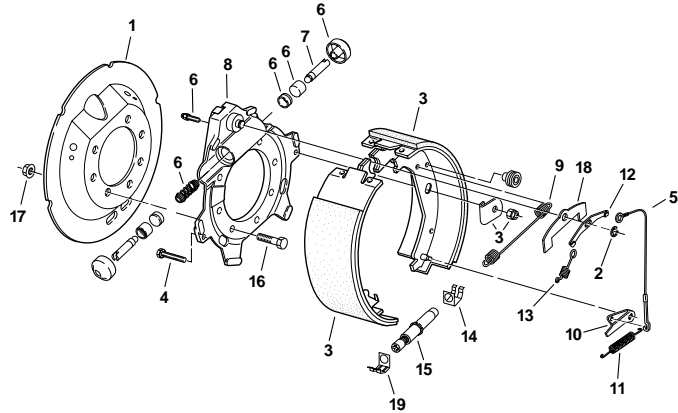
## REPLACEMENT PARTS

| Part #   | Diagram # | Description                   |
|----------|-----------|-------------------------------|
| 568229.3 | 1         | Dust cover assembly           |
| 568224   | 2         | Shoe hold down cotter pin     |
| 568233   | 3         | Shoe hold down nut            |
| 568225   | 4         | Shoe hold down spring         |
| 568232   | 5         | Shoe hold down washer         |
| 12LN     | 6         | Nut, ½" – 20 UNF hex standard |
| 568231   | 7         | Bolt, ¾" – 16 x ¾"            |
| 363334   | 8         | Lock washer, ¾"               |
| 568227   | 10        | Shoe hold down bolt           |
| 568234   | 11        | Shoe & lining                 |
| 568228   | 12        | Push rod                      |
| 568214   | 13        | Cylinder-wheel                |
| 568259   | 14        | Self-adjuster assembly        |
| 568226   | 15        | Retract spring                |
| 568230   |           | Connector – brake line        |

# Brake Assemblies



Right hand brake shown



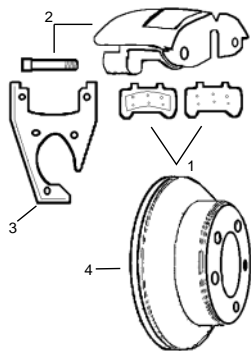
## 12¼" X 4"; 12½" X 5" HEAVY DUTY HYDRAULIC BRAKE – DEXTER – 10,000 - 12,000 - 15,000 LBS.

| Part # – Left Hand | Part # – Right Hand | Description  |
|--------------------|---------------------|--|
| 23-404             | 23-405              | Brake assembly 12¼ X 4", Duo-Servo, 10,000 lb. capacity per pair |
| 23-408             | 23-409              | Brake assembly 12¼ X 5", Duo-Servo, 12,000 lb. capacity per pair |
| 23-406             | 23-407              | Brake assembly 12¼ X 5", Duo-Servo, 15,000 lb. capacity per pair |

## REPLACEMENT PARTS

| Part # – 10K<br>12¼ X 4 | Part # – 12K<br>12¼ X 5 | Part # – 15K<br>12¼ X 5 | Diagram # | Description   |
|-------------------------|-------------------------|-------------------------|-----------|---|
| 36-115-22               | 36-115-23               | 36-115-23               | 1         | Dust cover  |
| 69-53                   | 69-53                   | 69-53                   | 2         | Retainer  |
| K71-167                 | K71-169                 | K71-169                 | 3         | Left hand Shoe & Lining Kit (1 left hand primary S&L, 1 left hand secondary S&L, 2 holddown washers, 2 holddown lock nuts)    |
| K71-168                 | K71-170                 | K71-170                 | 3         | Right hand Shoe & Lining Kit (1 right hand primary S&L, 1 right hand secondary S&L, 2 holddown washers, 2 holddown lock nuts) |
| 7-113                   | 7-113                   | 7-113                   | 4         | ShoeHolddown Screw  |
| 71-462                  | 71-462                  | 71-462                  | 5         | Adjuster cable  |
| K71-81                  | K71-81                  | K71-82                  | 6         | Wheel Cylinder Kit ( 1 cylinder spring, 2 cylinder boots, 2 cylinder pistons, 2 cylinder cups, 1 bleeder screw)               |
| 54-33                   | 54-33                   | 54-33                   | 7         | Cylinder push rod   |
| 36-63-6                 | 36-63-6                 | 36-63-4                 | 8         | Spider assembly   |
| 46-87                   | 46-87                   | 46-87                   | 9         | Retractor spring  |
| 71-464                  | 71-464                  | 71-464                  | 10        | Left hand adjuster lever  |
| 71-463                  | 71-463                  | 71-463                  | 10        | Right hand adjuster lever   |
| 46-135                  | 46-135                  | 46-135                  | 11        | Left hand adjuster lever spring   |
| 46-134                  | 46-134                  | 46-134                  | 11        | Right hand adjuster lever spring  |
| 71-456                  | 71-456                  | 71-456                  | 12        | Cable attachment bracket SFA  |
| 46-131-1                | 46-131-1                | 46-131-1                | 13        | Extension spring  |
| 46-133                  | 46-133                  | 46-133                  | 14        | Adjuster clip (barrel end)  |
| 48-19                   | 48-19                   | 48-19                   | 15        | Left hand adjuster assembly   |
| 48-20                   | 48-20                   | 48-20                   | 15        | Right hand adjuster assembly  |
| 7-116                   | 7-116                   | 7-116                   | 16        | Brake mounting bolt   |
| 6-92                    | 6-92                    | 6-92                    | 17        | Brake mounting nut  |
| 34-62                   | 34-62                   | 34-62                   | 18        | Piston stop   |
| 46-132                  | 46-132                  | 46-132                  | 19        | Adjuster clip (thread end)  |

# Brake Assemblies



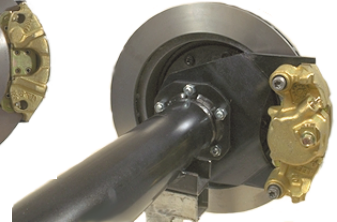
Bronze 10"



E-Coat 12"



Plain 13"



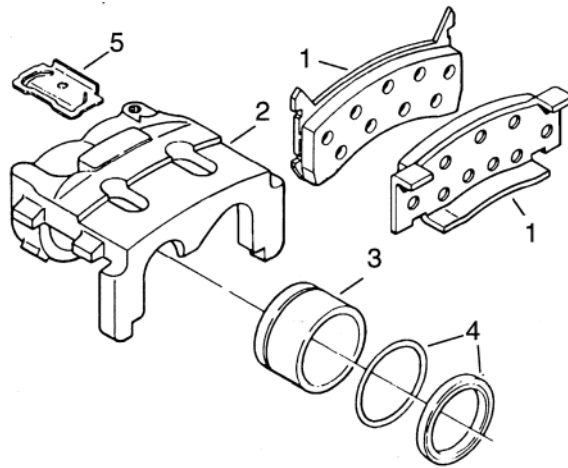
## HYDRAULIC DISC BRAKE – KODIAK – 10, 12 AND 13"

| Part #      | Description                | Rotor Size | Finish       | Application   |
|-------------|----------------------------|------------|--------------|---|
| 2/RCM-10    | Disc brake set             | 10"        | Plain        | Most 545 idler hubs, with 4 bolt brake flange         |
| 2/RCM-10-E  | Disc brake set             | 10"        | E-Coat       | Most 545 idler hubs, with 4 bolt brake flange         |
| 2/RCM-10-SB | Disc brake set             | 10"        | Solid Bronze | Most 545 idler hubs, with 4 bolt brake flange         |
| 2/HRCM-10   | Integral hub and rotor set | 10"        | Plain        | #84 Spindle, with 4 bolt brake flange 545 bolt circle |
| 2/HRCM-10-E | Integral hub and rotor set | 10"        | E-Coat       | #84 Spindle, with 4 bolt brake flange 545 bolt circle |
| 2/RCM-12    | Disc brake set             | 12"        | Plain        | Most 655 idler hubs, with 5 bolt brake flange         |
| 2/RCM-12-E  | Disc brake set             | 12"        | E-Coat       | Most 655 idler hubs, with 5 bolt brake flange         |
| 2/RCM-12-SB | Disc brake set             | 12"        | Solid Bronze | Most 655 idler hubs, with 5 bolt brake flange         |
| 2/RCM-13    | Disc brake set             | 13"        | Plain        | Most 865 idler hubs, with 5 bolt brake flange         |
| 2/RCM-13-E  | Disc brake set             | 13"        | E-Coat       | Most 865 idler hubs, with 5 bolt brake flange         |

## REPLACEMENT PARTS

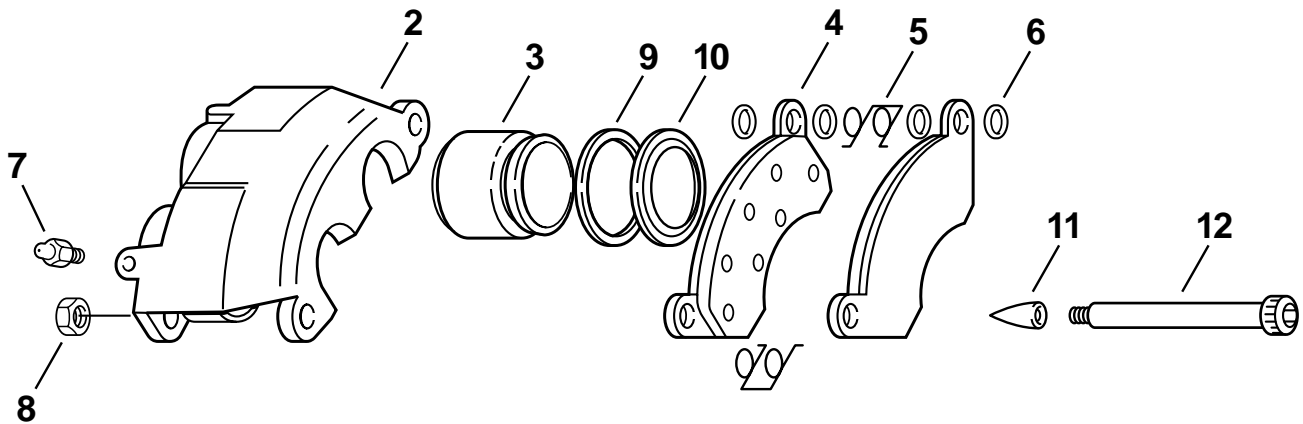
| Part #      | Diagram # | Description   |
|-------------|-----------|---|
| DBC-O-PAD   | 1         | Disc pads, organic for 10", 12" and 13" systems   |
| CALP-L      | 2         | Caliper, left hand for 10", 12" and 13" systems with mounting bolts, pads and hydraulic fittings    |
| CALP-R      |           | Caliper, right hand for 10", 12" and 13" systems with mounting bolts, pads and hydraulic fittings   |
| CALPB-L     |           | Caliper, left hand for bronze 10" and 12" systems with mounting bolts, pads and hydraulic fittings  |
| CALPB-R     |           | Caliper, right hand for bronze 10" and 12" systems with mounting bolts, pads and hydraulic fittings |
| CMB10       | 3         | Bracket, caliper mounting for 10" systems   |
| CMB12-L     |           | Bracket, caliper mounting left hand for 12" systems   |
| CMB12-R     |           | Bracket, caliper mounting right hand for 12" systems  |
| CMB13-L     |           | Bracket, caliper mounting left hand for 13" systems   |
| CMB13-R     |           | Bracket, caliper mounting right hand for 13" systems  |
| ROTOR-10    | 4         | Rotor, 10" automotive finish  |
| ROTOR-10-E  |           | Rotor, 10" E-coat finish  |
| ROTOR-10-SB |           | Rotor, 10" solid bronze   |
| ROTOR-12    |           | Rotor, 12" automotive finish  |
| ROTOR-12-E  |           | Rotor, 12" E-coat finish  |
| ROTOR-12-SB |           | Rotor, 12" solid bronze   |
| ROTOR-13    |           | Rotor, 13" automotive finish  |
| ROTOR-13-E  |           | Rotor, 13" E-coat finish  |

# Brake Assemblies



## HYDRAULIC DISC BRAKES – HAYES – 10,000 - 12,000 LB.

| Part #  | Diagram # | Description                          |
|---------|-----------|--------------------------------------|
| SL116   | 1         | Disc brake pad and lining, one wheel |
| 9231512 | 2         | Disc brake caliper, left hand        |
| 9231511 | 2         | Disc brake caliper, right hand       |
| 096930  | 3         | Disc brake caliper piston            |
| 980862  | 4         | Disc brake caliper rebuild kit       |
| 9633700 | 5         | Disc brake pad retainer plate        |



## HYDRAULIC DISC BRAKES – DEXTER – 10,000 - 12,000 LB.

| Part #  | Diagram #   | Description   |
|---------|-------------|---|
| 89-2-2  | 2           | Caliper assembly  |
| 54-66   | 3           | Caliper piston  |
| 7-186   | 12          | Shoulder screw, 5/8 X 5   |
| K71-180 | 4, 5, 8, 11 | Disc Pad Replacement Kit (4 brake pads, 4 anti-rattle springs, 4 hex locknuts, 1 installation tool) |
| K71-181 | 6, 7, 9, 10 | Caliper Repair Kit (8 'o' rings, 2 bleeder screws, 4 caliper seals, 4 dust boots)                   |